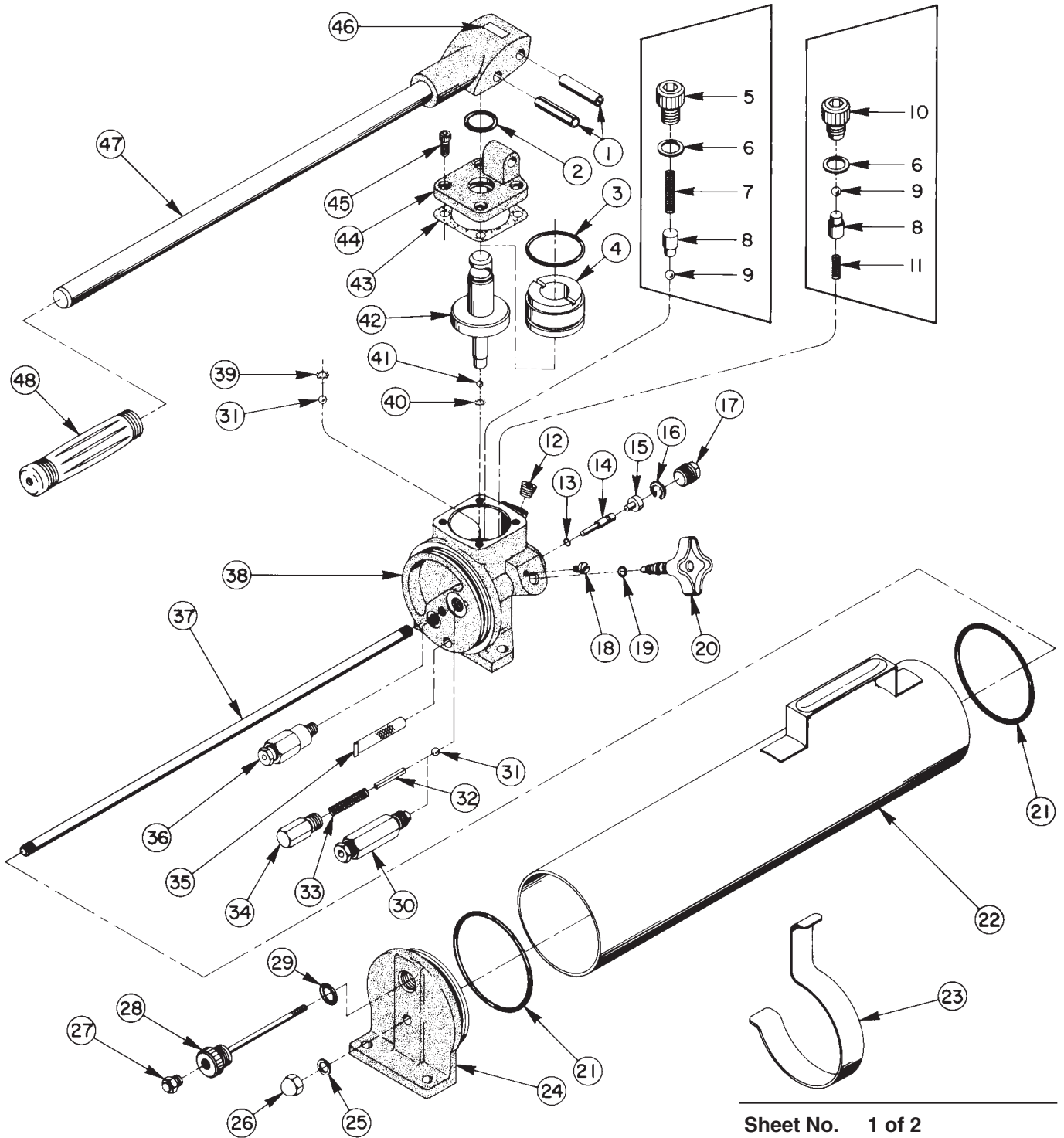


Parts List for:

4006	100192	P158
60576	D-01172AA	P158-RA
60614	P156	Y-43
61042	P156SR	

**TWO STAGE
HYDRAULIC HAND PUMP
TWO-WAY VALVE**



Parts List, Form No. 100337, Back sheet 1 of 2

Item No.	Part No.	No. Req'd	Description
1	10415	2	Roll Pin (3/8 Dia. x 1-3/4 Lg.; See diagram, sheet 2 of 2)
2	*10278	1	O-ring (1-1/8 X 7/8 X 1/8, -212)
	†19028	1	O-ring (1-1/8 X 7/8 X 1/8, -212)
3	*10913	1	O-ring (2" X 1-13/16 X 3/32, -133; For 60576, P156, P156SR)
	†19015	1	O-ring (2" X 1-13/16 X 3/32, -133; For 60576, P156, P156SR)
4	32405	1	Sleeve (For 60576, P156, P156SR)
5	21600	1	Soc. Hd. Cap Screw (5/16-18 NC X 3/8 Lg.; Torque to 150/160 in. lbs.)
6	*11031	2	Copper Washer (15/32 X 5/16 X 1/32)
7	*10445	1	Compression Spring (5/32 O.D. X 3/4 Lg.)
8	24148	2	Ball Guide
9	*12223	2	Steel Ball (3/16 Dia.)
10	*24150	1	Valve Seat (Torque to 150/160 in lbs.)
11	*12040	1	Compression Spring (1/8 O.D. X 1/2 Lg.)
12	10479	1	Pipe Plug (1/4 NPTF; Torque to 140/150 in. lbs.)
	15177	1	Pressure Gauge (For 100192 Only - Not Shown)
13	*17797	1	Disogrin O-ring (1/4 X 1/8 X 1/16, -006)
	†206445	1	O-ring (1/4 X 1/8 X 1/16, -006)
14	24149	1	Unloading Valve Piston
15	27060	1	Retainer
16	*11460	1	Retaining Ring
17	11127	1	Pipe Plug (3/8 NPTF)
	10970	1	Pipe Plug (1/4 NPTF; For 100192 Only)
	10676	1	Reducing Bushing (For 100194 Only - Not Shown)
18	*13063	1	Pan Hd. Mach. Screw
19	*10266	1	O-ring (3/8 X 1/4 X 1/16, -010)
	†11438	1	O-ring (3/8 X 1/4 X 1/16, -010)
20	204752	1	Control Valve & Knob Assembly (Includes Item 19)
21	*10873	2	O-ring (3-7/8 X 3-5/8 X 1/8, -239S)
	†19048	2	O-ring (3-7/8 X 3-5/8 X 1/8, -239)
22	204114-WH2	1	Reservoir (For 60576, 60614, 61042)
	204114-PU2	1	Reservoir (For 100192)
	204114-OR9	1	Reservoir (For P158, P156, 60615-GRC)
	204114-BL2	1	Reservoir (For Y-43 & 4006)
	204114-BR13	1	Reservoir (For D-01172AA)
	204114-GR10	1	Reservoir (For P158-RA)
	204114-YE3	1	Reservoir (For Y43-LUAM)
	204114-RE10	1	Reservoir (For H158)
	45004-OR9	1	Reservoir Ass'y (For P156SR)
23	38731	1	Handle Holder (For 60576, 61042)
24	37960-WH2	1	End Cap
25	*12042	1	Copper Washer (9/16 X 3/8 X 1/32)
26	18843	1	Cap Nut
27	18317	1	Relief Valve
28	204150	1	Filler Cap & Dipstick Assembly
29	*10527	1	O-ring (.818 X .644 X .087, -908)
	†19092	1	O-ring (.818 X .644 X .087, -908)
30	204750	1	Unloading Valve Ass'y (For 60576, 61042, PP156, P156SR, Y43-LUAM - See sheet 2 of 2)
31	*10377	2	Steel Ball (5/16 Dia.)
32	204749	1	Ball Stop

- Continued -

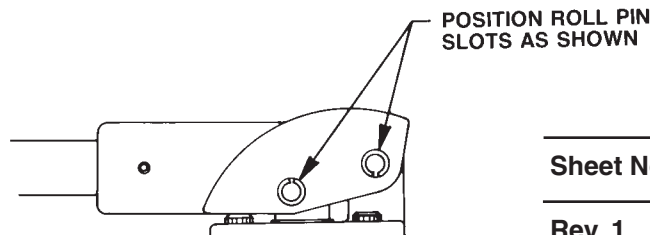
Item No.	Part No.	No. Req'd	Description
33	208698	1	Compression Spring (5/16 O.D. X 1-15/16 Lg.)
34	204748	1	Spring Retainer
35	*24789	1	Filter
36	21278-86	1	Relief Valve Ass'y (For 60576 Only - Set at 8,600 PSI, see sheet 2 of 2)
	21278-30	1	Relief Valve Ass'y (For 100192 Only - set at 3000 PSI, see sheet 2 of 2)
	21278	1	Relief Valve Ass'y (Set at 10,000 PSI, see sheet 2 of 2)
37	204120	1	Tie Rod
	208158	1	Tie Rod (For P156SR Only)
38	60570-WH2	1	Pump Body
	61117	1	Pump Body (For Y43-LUAM only)
39	*11893	1	Retaining Ring
40	*12041	1	Retaining Ring
41	*10375	1	Steel Ball (1/4 Dia.)
42	24146	1	Piston Assembly
	25522	1	Piston Assembly (For 60576, 61042, P156, P156SR)
43	†*24640	1	End Cap Gasket
44	38598-WH2	1	Pump Body Cap
45	10006	4	Soc. Hd. Cap Screw (1/4-20 UNC X 5/8 Lg.; Torque to 150/160 in lbs.)
46	*204071	1	Decal
47	34260	1	Handle Ass'y (For 60576, 61042)
	303565	1	Handle Ass'y (For P156SR)
	31872-WH2	1	Handle Assembly
48	11610	1	Handle Grip

PARTS INCLUDED BUT NOT SHOWN

10575	2	Drive Screw (#2 X 3/16 Lg.: Used For Name Plate)
10029	4	Hex Hd. Cap Screw (5/16-18 X 3/4 Lg. - For 60576, 61042)
10474	1	Street Elbow (For 60576, 61042)
36890	1	Hose Ass'y (For 60576 Only)
38031	2	Trade Name Decal (For 100192)
204753	2	Trade Name Decal (For P158D)
210492	2	Decal, Trade Name (For H158)
38034	1	Trade Name Decal (For Y-43 & 4006)
208142	2	Trade Name Decal (For P156, P156SR)
16277	1	Trade Name Decal (For 60615-GRC)
*201826	1	Decal (For D-01172AA Only)
*201829	1	Decal, Instruction (For 60614 Only)
13888	1	Fitting (For Y43-LUAM Only)
†205724	1	Decal (Viton)

Part numbers marked with an asterisk (*) are contained in Standard Repair Kit No. 300083.

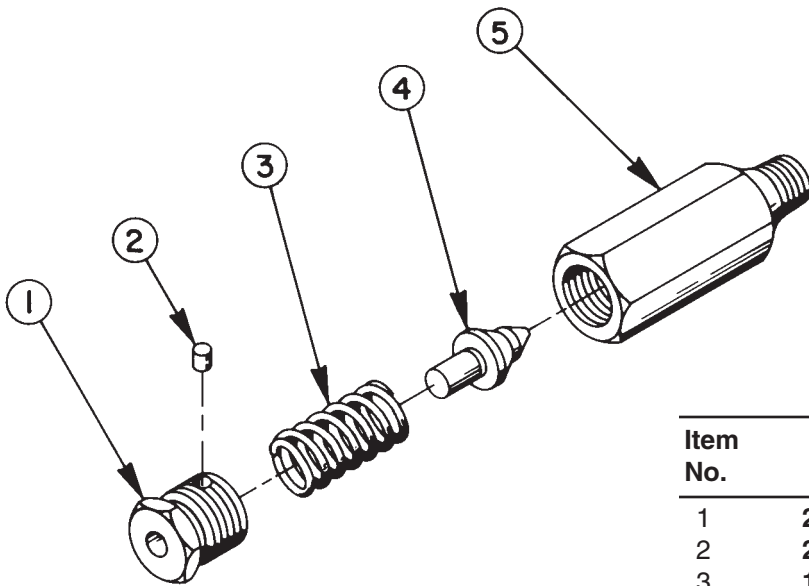
Part numbers marked with a dagger (†) are contained in Viton Seal Kit No. 300232.

HANDLE ASSEMBLY

Sheet No. 2 of 2

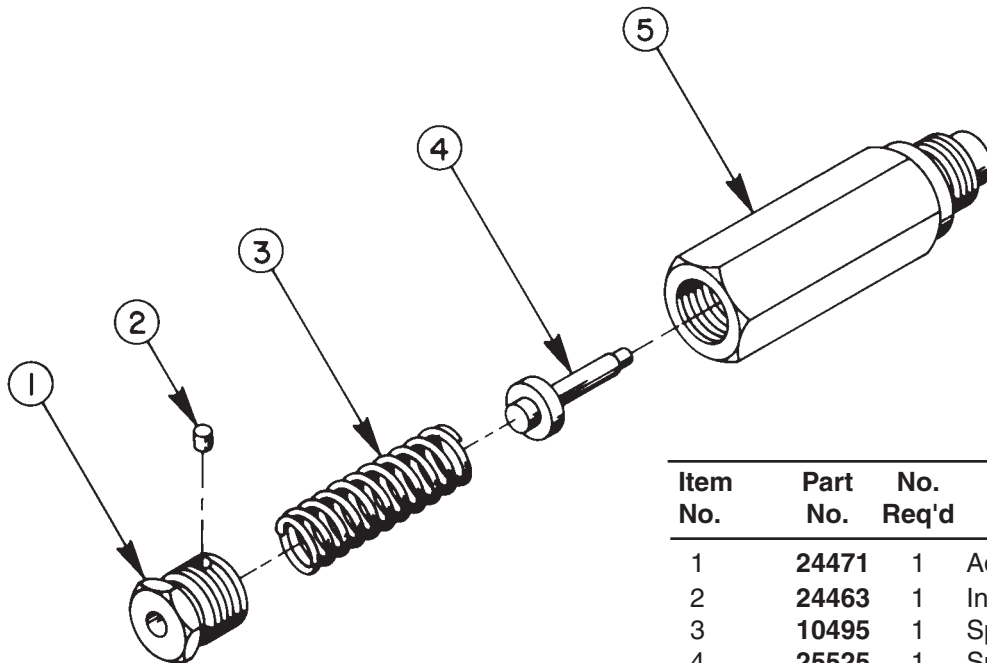
Rev. 1 Date: 12 Mar 2003

RELIEF VALVE ASSEMBLY



Item No.	Part No.	No. Req'd	Description
1	24471	1	Adjusting Plug
2	24463	1	Insert (Nylock)
3	10428	1	Spring
4	21046	1	Cone
5	21286	1	Valve Body

UNLOADING VALVE ASSEMBLY



Item No.	Part No.	No. Req'd	Description
1	24471	1	Adjusting Plug
2	24463	1	Insert (Nylock)
3	10495	1	Spring
4	25525	1	Spring Retainer
5	204747	1	Valve Body

Refer to any operating instructions included with this product for detailed information about operation, testing, disassembly, reassembly, and preventive maintenance.

Items found in this parts list have been carefully tested and selected. **Therefore: Use only genuine replacement parts!**

Additional questions can be directed to our Technical Services Department.